

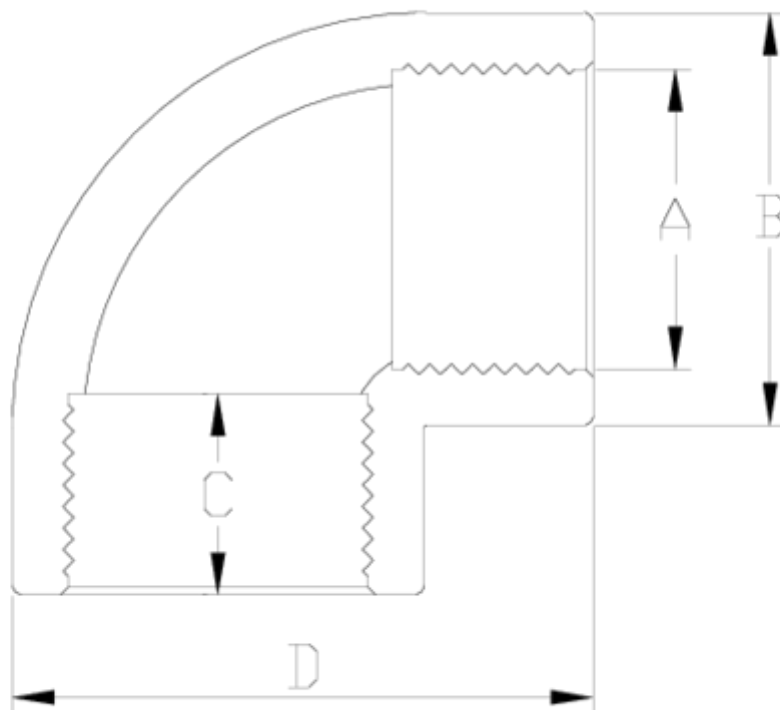


PVC pressure fittings

90° elbow, F/F trheaded outlet ITEM 005

Ref.	Description	Net W.	Vol. (m ³)	Gross W.	Batch
1002301	CODO 90° ROSCA H-H 1/2"-1/2"	0.023	0.00473	2.45	100
1002302	CODO 90° ROSCA H-H 3/4"-3/4"	0.035	0.00892	3.65	100
1002303	CODO 90° ROSCA H-H 1"-1"	0.066	0.02244	7.11	100
1002304	CODO 90° ROSCA H-H 1 1/4"-1 1/4"	0.115	0.03129	12.12	100
1002305	CODO 90° ROSCA H-H 1 1/2"-1 1/2"	0.180	0.04879	18.60	100
1002306	CODO 90° ROSCA H-H 2"-2"	0.327	0.04879	16.93	50
1002307	CODO 90° ROSCA H-H 2 1/2"-2 1/2"	0.456	0.04880	14.35	30
1002308	CODO 90° ROSCA H-H 3"-3"	0.889	0.04836	16.67	18





ITEM 005 | 90° elbow, F/F threaded outlet

Código	A	Peso (g)	B	C	D	PN	ROSCA
02301	1/2"	22	27	16	41	PN10	BSP
02302	3/4"	34	33	17	50	PN10	BSP
02303	1"	66	41	21	61	PN10	BSP
02304	1 1/4"	97	50	23	74	PN10	BSP
02305	1 1/2"	165	61	24	88	PN10	BSP
02306	2"	322	76	28	109	PN10	BSP
02307	2 1/2"	441	89	32	128	PN10	BSP
02308	3"	864	107	35	155	PN10	BSP



PRODUCT DOCUMENTS



PRODUCT CERTIFICATES



COMPANY CERTIFICATES

